

A Brief History & Overview of Construction Projects, Studies & Redistricting

February 16, 2017

**Disclaimer - The
information contained in
this presentation is based
on the best current and
historical information as of
February 16, 2017**





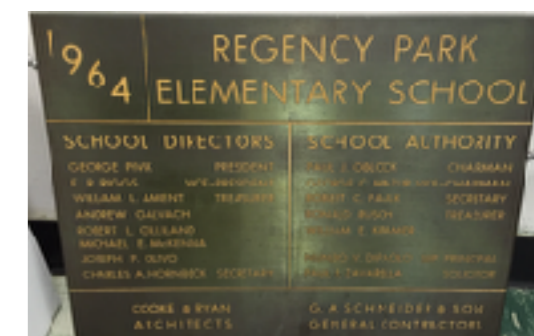
Center Public School 1923

Renton School 1937



1806 - First Plum School

- 1889 - nine (9) one-room school houses
- 1918-1938 - School Consolidation (Harding, Logans Ferry, Renton and Stewart)
- 1939 - First High School located on School Road
- 1954-1964 - Center Elementary, Plum Senior High School, Holiday Park, Regency Park
- 1966-1969 - PHS addition, Adlai Stevenson & Oblock Junior High School



1970 - 1999



- 1971 - Holiday Park Addition
- 1973 - Pivik Cafeteria Addition (Plum Borough Junior High School)
- 1973 - 1989 - Plum Jr. High 7-9 & Oblock Jr. High 7-9
- 1976 - PHS Addition
- 1989 - Pivik Renovation (Elementary School)
- 1995-1998 - Gym additions - Holiday Park, Regency Park & Adlai

Late 1990s

District Wide Facility Study completed by Foreman Architects and Engineers



Center Elementary School

2000 - Renovation & Addition, Foreman Architects and Engineers

1986 - 1/2 day Kindergarten

2003 - Full-day Kindergarten





CENTER ELEMENTARY SCHOOL

PULPIN BOROUGHS SCHOOL DISTRICT

BOARD OF DIRECTORS:

<p>DIANA TRESLU, PRESIDENT GARY K. HORNER, VICE-PRESIDENT TOM MCCOUGH, TREASURER DR. JAMES W. GALABRESSE, SECRETARY DR. GEORGE E. COOKE, SUPERINTENDENT</p>	<p>JANICE SCHIFFERFROG EVELYN SMITH DANIEL J. TRAFICANTI DONNA ADAMSKI RENA LYNN KOTERSKI BARBARA KRALJIC</p>
-----------------------------------------------------------------------------------------------------------------------------------------------------------------------------------------------------------------	--------------------------------------------------------------------------------------------------------------------------------------------------------------------------------

CONTRACTORS:

<p>THOMAS DIVANO & SON, INC. PLEASANT HILLS CONSTRUCTION CO. R. A. PRINCEBAM, INC. ALLEGHENY CITY ELECTRIC RHODNIE ROOFING, INC. COLONIAL PAINTING & FLOORING SAMARAS CONSTRUCTION, INC. EL SHAMUE INDUSTRIES COMMERCIAL APPLIANCE CONTRACTS, INC. MARIE STRAYER FURNISHINGS CASLEY & BYERS, INC. AMERICAN STANDARD ENVIRONMENTAL, INC.</p>	<p>GENERAL CONTRACTOR PLUMBING CONTRACTOR E.V.A.C. CONTRACTOR ELECTRICAL CONTRACTOR ROOFING CONTRACTOR FLOORING CONTRACTOR PAINTING CONTRACTOR PAVING CONTRACTOR FOOD SERVICE EQUIPMENT GENERAL CARPENTRY ACOUSICAL/DRYWALL ASBESTOS ABATEMENT</p>
--------------------------------------------------------------------------------------------------------------------------------------------------------------------------------------------------------------------------------------------------------------------------------------------------------------------------------------------------------------------------------------------------------------------------------------------------------------------------------------------------------	-----------------------------------------------------------------------------------------------------------------------------------------------------------------------------------------------------------------------------------------------------------------------------------------------------------------------------------------------------------------------------------------------

ARCHITECT:
 FOREMAN ARCHITECTS/ENGINEERS

CONSTRUCTION MANAGER:
 FOREMAN PROGRAM & CONSTRUCTION MANAGERS

2000

10 percent rise seen by 2005

Pump braces for enrolment increase

Developing plans to increase a Pupin School District's enrolment by 10 percent by 2005, the district has set a record for the number of children enrolled in 2000.

By Lynn Herrera Staff Writer

From school district to township, the 10 percent enrolment increase goal is being met. According to Lynn Herrera, the district's enrolment is up 10 percent from 2000 to 2005, which is a record for the district's enrolment.

The district board has created a high school building program and has decided to build a new high school in the township. The first step of the district's building project is to acquire a site for a new high school. The district board has approved a site for a new high school in the township. The district board has approved a site for a new high school in the township.

The district board has approved a site for a new high school in the township. The district board has approved a site for a new high school in the township. The district board has approved a site for a new high school in the township.

Year	Enroll	2000	2001	2002	2003	2004	2005
1999-00	1,279	323	1,382	1,468			
2000-01	1,294	178	1,413	1,497			
2001-02	1,291	171	1,427	1,484			
2002-03	1,395	176	1,448	1,488			
2003-04	1,412	178	1,435	1,477			
2004-05	1,420	180	1,460	1,490			
2005-06	1,490	180	1,518	1,552			
Total							4,300

Enroll **Enrollment**

Center Elementary 323

Pupin Elementary 178

Greenwood Elementary 174

Northside Elementary 167

Highway Elementary 100

O'Donnell Elementary 85

Highway Elementary 1,382

Total **4,300**

Source: Pupin School District Office

Should there be a decrease in enrolment, the district should be able to handle it. The district board has approved a site for a new high school in the township. The district board has approved a site for a new high school in the township. The district board has approved a site for a new high school in the township.

2000

Oblock Junior High School

Foreman Architects and Engineers





1969

A. E. OBLOCK JUNIOR HIGH SCHOOL

BOARD OF SCHOOL DIRECTORS

GEORGE DIVIK	PRESIDENT
DONALD R. WATSON	VICE PRESIDENT
MICHAEL McKENNA	TREASURER
RICHARD LUNN	
ROBERT L. SILLIANT	
WILLIAM E. KRAMER	
THOMAS J. MICHELS, SR.	
JOHN W. SPROUL, JR.	
THOMAS R. HORNER, JR.	

JAMES W. CALABRESSE	SECRETARY
PAUL R. DAYARELLA	SOLICITOR


SCHOOL AUTHORITY BOARD

PAUL OBLOCK	PRESIDENT
GEORGE MAZUR	VICE PRESIDENT
VICTOR M. BIANCULLI	
ROBERT G. PAULK	SECT. - TREAS.
RONALD L. RUSCH	ASST. SECT. - TREAS.
DR. NUNZIO V. DI PAOLO	SUPERVISING PRINCIPAL
MILTON M. RYAN & ASSOCIATES	ARCHITECTS

erected 1969

A.E. OBLOCK JUNIOR HIGH SCHOOL

PLUM BOROUGH SCHOOL DISTRICT



BOARD OF SCHOOL DIRECTORS

GARY K. HORNER	PRESIDENT
DANA TRESCO	VICE PRESIDENT
TOM MCGOUGH	TREASURER
DONNA J. ADAMSKI	
MARY OLISE ANDERSON	
BARBARA KRALUSE	
DR. JAMES W. CALABRESSE	SECRETARY
DR. GEORGE E. COUSE	SUPERINTENDENT

CONTRACTORS

GUYTON CONSTRUCTION COMPANY GERTY AND BIRDAI COMPANY WARE PLUMBING COMPANY T-4 SUPPLY COMPANY	GENERAL CONTRACTOR MECHANICAL CONTRACTOR PLUMBING CONTRACTOR ELECTRICAL CONTRACTOR
--------------------------------------------------------------------------------------------------------	---------------------------------------------------------------------------------------------

ARCHITECT
FOREMAN ARCHITECTS & ENGINEERS

CONSTRUCTION MANAGER
FOREMAN PROGRAM & CONSTRUCTION MANAGERS

2001

2001

Plum Senior High School

Foreman Architects and Engineers





**PLUM SENIOR HIGH SCHOOL
PLUM BOROUGH SCHOOL DISTRICT**

BOARD OF SCHOOL DIRECTORS

DIANA TRESKO GARY K. HORNER MARK LUKACS TOM MCGOUGH	PRESIDENT VICE-PRESIDENT SECRETARY TREASURER
MARY LOUISE ANDERSON BARBARA KRAUSE JEFFREY D. MATTHEWS	TODD J. MINK JANICE SCHOENEBERGER RENA LYNN KOTESKI

ADMINISTRATORS

DR. GEORGE E. COOKE PAMELA KINZLER	SUPERINTENDENT PRINCIPAL
---------------------------------------	-----------------------------

CONTRACTORS

C & M CONTRACTING, INC. SAUER INCORPORATED W.G. TOMKO INCORPORATED CUISTA ELECTRIC INC.	GENERAL PLUMBING HEATING ELECTRICAL
--------------------------------------------------------------------------------------------------	----------------------------------------------

ARCHITECT

FOREMAN ARCHITECTS ENGINEERS

CONSTRUCTION MANAGER

FOREMAN PROGRAM AND CONSTRUCTION MANAGERS



AUGUST, 2003

**PLUM BOROUGH
SENIOR HIGH SCHOOL**

BUILDING AUTHORITY

PATRICK D'BLOCK GEORGE C. MAZUR RONALD L. RUSCE KEITH DOYELL ALBERT P. FLICKINGER JAMES W. CALABRESSE FRANK V. JONES	PRESIDENT VICE PRESIDENT ASST. SECY. - TREAS. SECY. - TREAS. SOLICITOR
----------------------------------------------------------------------------------------------------------------------------------------	------------------------------------------------------------------------------------

SCHOOL DIRECTORS

FORWARD E. WATSON THOMAS R. MCENEE, JR. WILLIAM E. KRANER RICHARD H. LUNN MICHAEL McELROY THOMAS A. MICHELL, SR. JEANETTE SPOFFORD DOUGLAS WATNER WILLIAM T. WERLEY	PRESIDENT VICE PRESIDENT
---------------------------------------------------------------------------------------------------------------------------------------------------------------------------------------------	-----------------------------

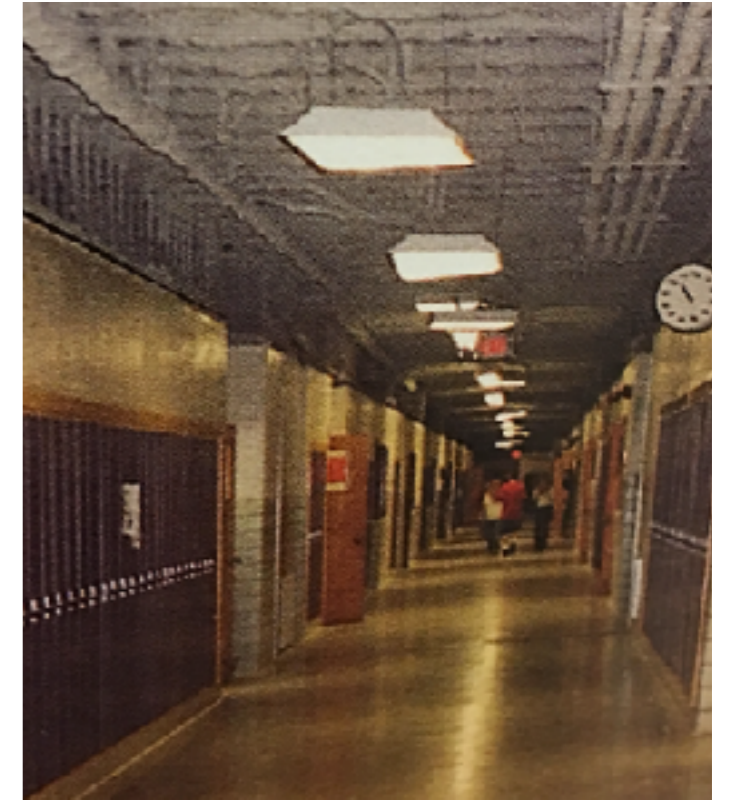
DR. R. Z. DI PAOLO SUPERINTENDENT

ARCHITECT

WILSON, W. REAF & ASSOCIATES

1976

2003



Redistricting 2005

Plum expects 10 percent rise seen by 2005

By Eijiro Kawada
Staff writer

Plum School District is bracing for a 10-percent enrollment increase over the next eight years. According to William Byran, the borough's building inspector, 115 new houses were built last year in Plum.

The number is the largest among Valley communities, and the construction continues. A demographic study conducted a few years ago shows the borough's school district would see an additional 300 to 400 pupils by 2005, which is about a 10 percent increase from the district's current enrollment.

The school district has created a task force of residents, administration staff and teachers to develop a long-range plan to prepare for the projected increase.

As the first step of the district's building project, the school board approved a complete renovation of Center Elementary School last month, which would cost between 7 million to \$9 million.

The renovation would add six to 10 new classrooms plus a new library and gymnasium.

Superintendent George Cooke said the demographic study suggests the district lacks sufficient classroom space even though the projected increase should be

Plum braces for enrollment increase

Renovating Center Elementary is Plum School Board's first step to prepare the district for an increase in the number of pupils.



The renovation of Center Elementary School will cost between \$7 million and \$9 million. A new gym, library and six to 10 new classrooms are needed.

Projected enrollment at Plum schools.					Enrollment at Plum schools, based on the 1995-96 school year.	
Year/ grades	K*-6th	7th-8th	9th-12th	Total	School	Enrollment
1998-99	2,279	753	1,436	4,468	Center Elementary	352
1999-00	2,364	778	1,435	4,597	Pivik Elementary	645
2000-01	2,381	771	1,487	4,640	Stovonson Elementary	474
2001-02	2,410	772	1,512	4,694	Holiday Park Elementary	567
2002-03	2,392	808	1,528	4,739	Residency Park Elementary	306
2003-04	2,410	818	1,539	4,767	Cook Junior High	682
2004-05	2,425	783	1,561	4,769	High School	1,222
2005-06	2,466	780	1,556	4,802		

Plum Borough School District

200 School Road, Plum Pennsylvania 15239

DISTRICT ADMINISTRATIVE OFFICES

Dr. George E. Cooke

Superintendent

(412) 795-0100

FAX: (412) 795-9115

Donald A. Teli

Assistant Superintendent

Lillian Naccarali

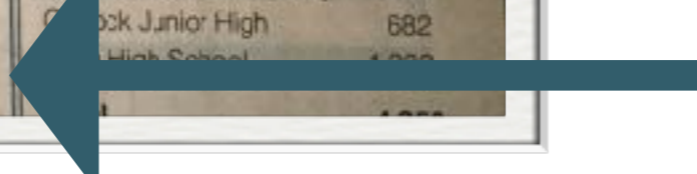
Assistant Superintendent

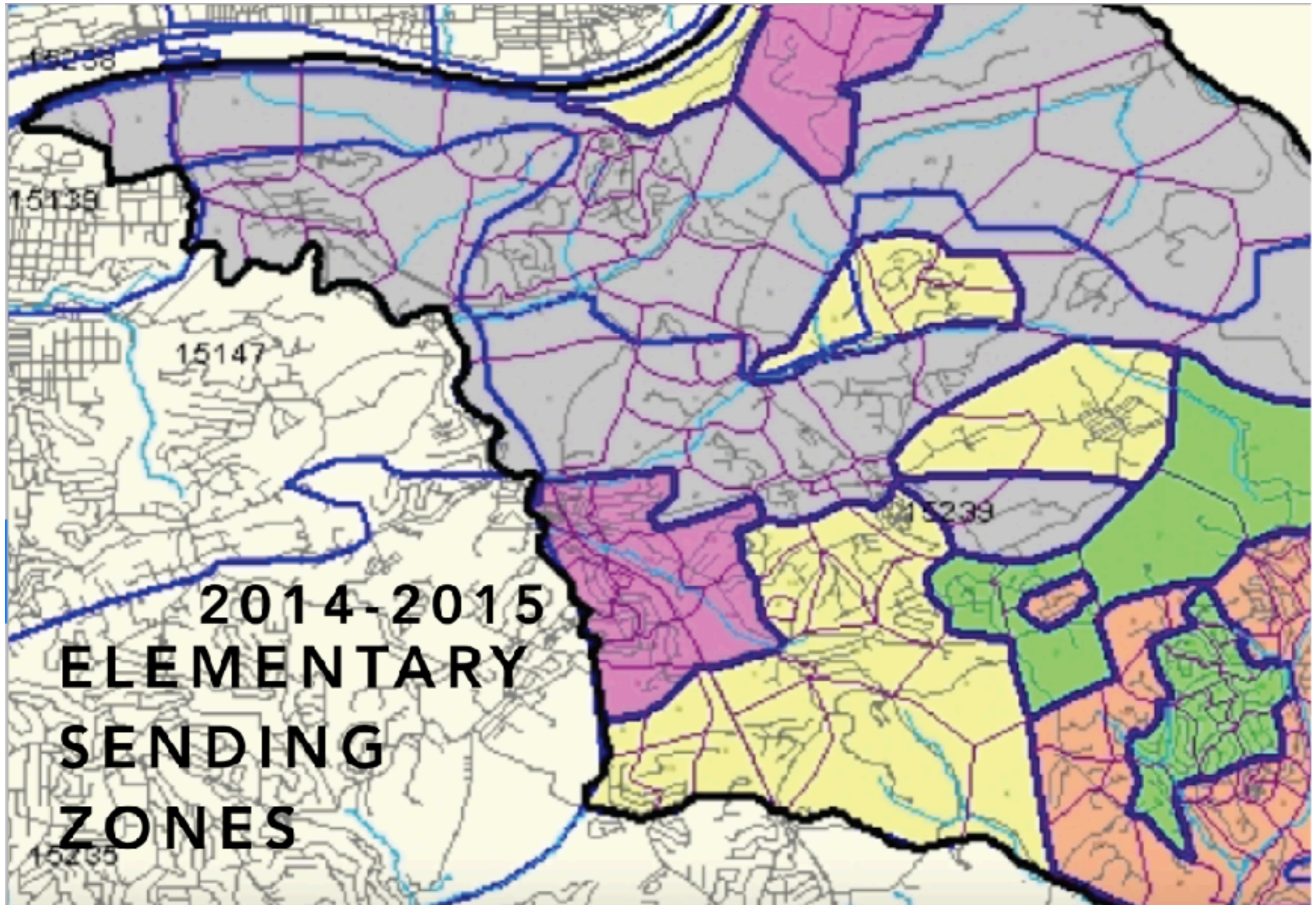
January 16, 2005

Dear Committee Members:

Thank you for all of your work on this committee. It was obvious from the presentations at our last meeting that a lot of time, effort and thought was spent on the development of the plan. Our next meeting of the whole is scheduled for Monday, January 24th at 7:00 PM in the Pivik Cafeteria. At that time, we will reach consensus on the recommendation or recommendations the Redistricting Committee will make to the Education Committee.

over estimated by
432 students





Redistricting 2005

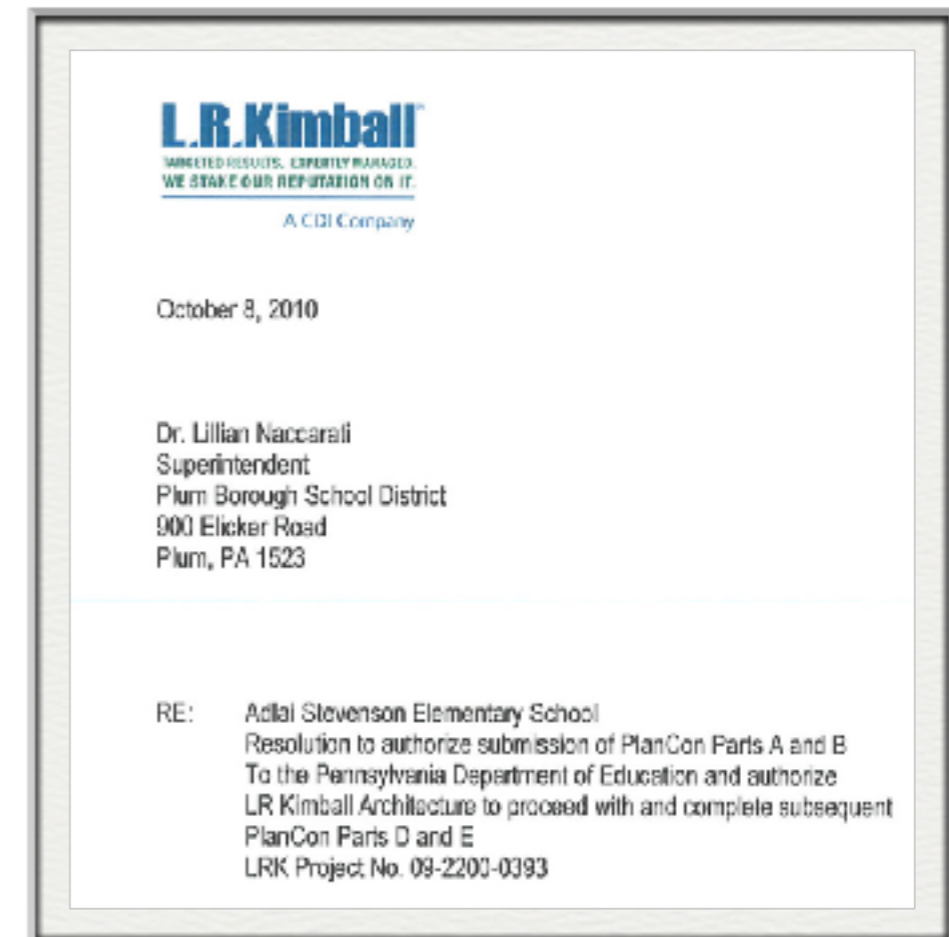
2005-2015

2007 - 2011

- 2007 - 5-Year Facilities Study
Systems and Structures
- 2008 - LR Kimball Feasibility Study
Configuration options, costs,
enrollment projections, etc...
- 2009 - LR Kimball DWFS
- 2010 - Adlai & Holiday Park plans
- 2011 - Frombaugh Facilities Report

2010 Construction Renovation Plans

- **Build a New Pivik** - 4 Run K-6 School
- Renovate Holiday Park - 3 Run K-6 School
- Renovate Adlai - 3 Run K-6 School
- Regency Park - TBD
- Center - renovated in 2000 - 3 Run K-6 School



L.R. Kimball™

TARGETED RESULTS. EXPERTLY MANAGED.
WE STAKE OUR REPUTATION ON IT.

A CDI Company

Plum Borough School District

Schematic Design Presentation For

Holiday Park Elementary School

Adlai E. Stevenson Elementary School

February 15, 2011



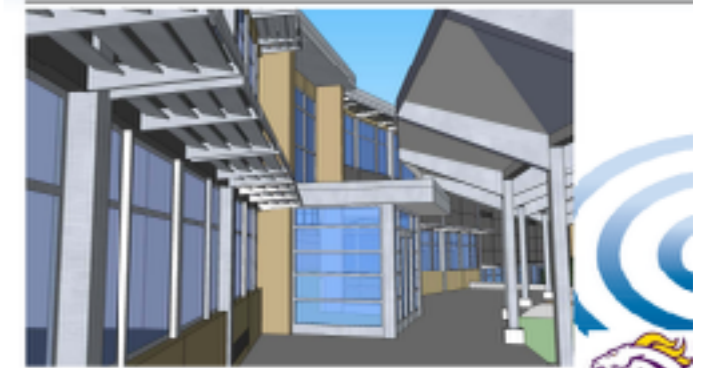
Plum Borough School District

New Main (Secure Entry /
Window Replacement in Existing Masonry Openings (Typical)



Adlai E. Stevenson Elementary School / Schematic Design

Plum Borough School District



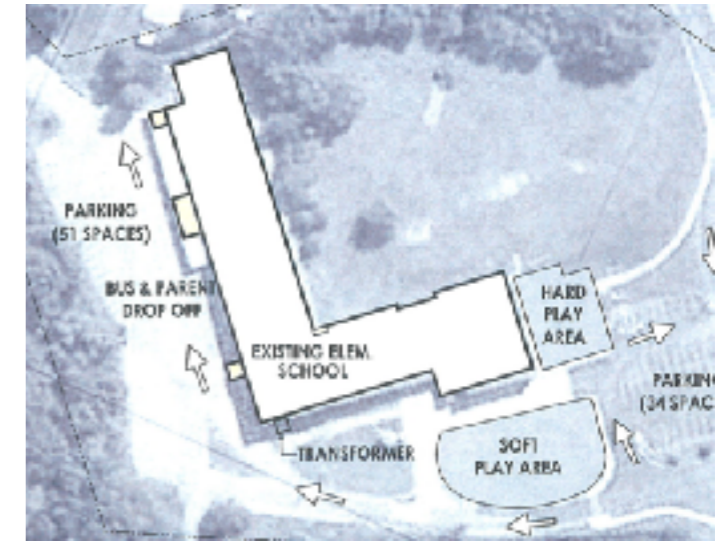
Holiday Park Elementary School / Schematic Design

First Floor Plan

- 6,760 gsf proposed architectural modifications
- 190 gsf proposed architectural additions
- proposed demolition



Holiday Park Elementary School / Schematic Design



Adlai Stevenson Elementary School Renovation and/or Addition

Temporary Inconvenience
Permanent Improvement

September 11, 2012

Pre-Decisional Discussion



Adlai Stevenson Elementary School Renovation and/or Addition

Revised October 16, 2012

September 11, 2012 &
September 18, 2012

Pre-Decisional Discussion



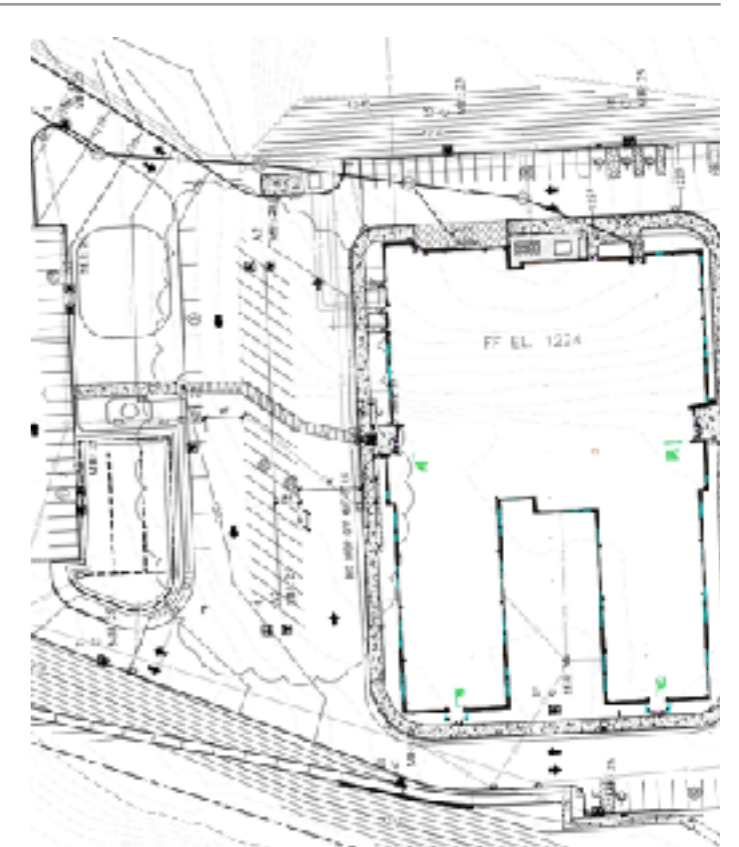
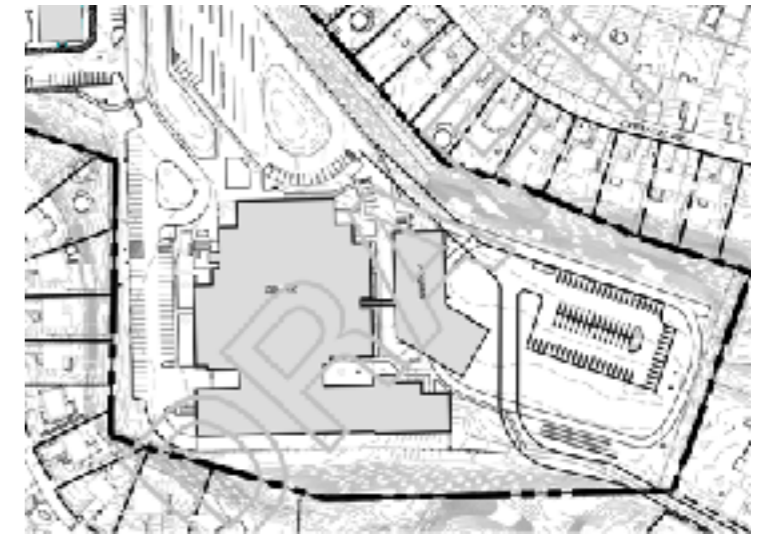
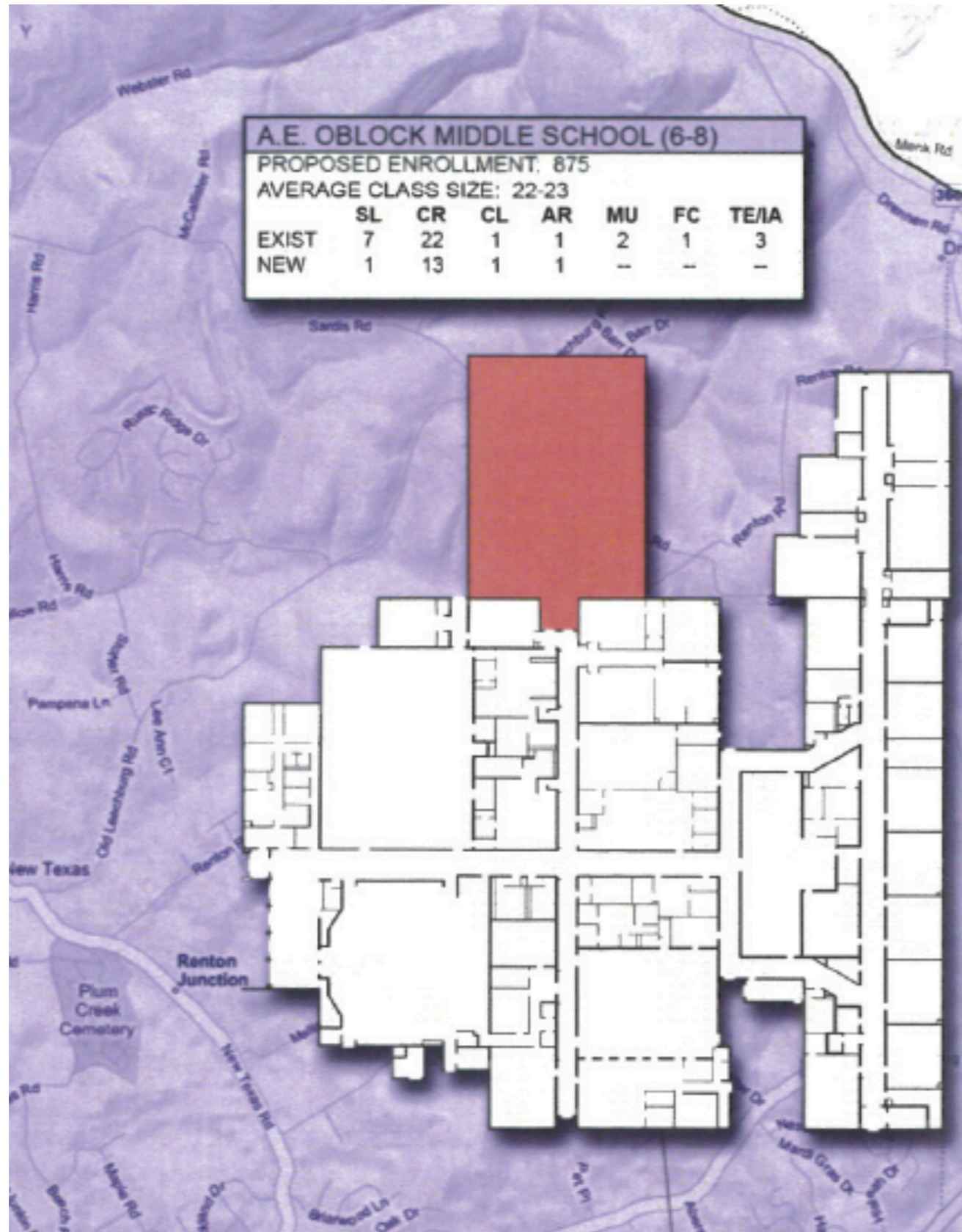
ADLAI STEVENSON CONSTRUCTION PROJECT

November 5, 2012



Is a 5-run elementary too BIG?

2012



Pivik Elementary School

LR Kimball

GEORGE PIVIK ELEMENTARY

DEDICATED AUGUST 2012

ADMINISTRATION

DR. LILLIAN NACCARATI	SUPERINTENDENT, 2009 - 2011
DR. TIMOTHY GLASSPOOL	SUPERINTENDENT, 2012
EUGENE J. MARRACCINI	DIRECTOR OF BUSINESS AFFAIRS
DR. GAIL YAMNITZKY	PRINCIPAL
CYNTHIA VENTO	BOARD SECRETARY
LEE V. PRICE	SOLICITOR

RUSSO CONSTRUCTION SERVICES	OWNER'S SITE MANAGER
L.R. KIMBALL	ARCHITECT
MASSARO CORPORATION	CONSTRUCTION MANAGER
NELLO CONSTRUCTION COMPANY	GENERAL CONTRACTOR

BOARD OF DIRECTORS

DAWN CARUSO	2009-2010
LINDA EAZOR	2009-2010
KRIS TRAFICANTI	2009-2010
JEFF MATTHEWS	2009-2011
ROSE MCGUIRK	2009-2011
JEFF RUSSO	2009-2011
TOM MCGOUGH	2009-2012
LORETTA WHITE	2009-2012
SAL COLELLA	2010-2012
KEVIN DOWDELL	2010-2012
ANDREW DRAKE	2010-2012
SHANE MCMASTERS	2010-2012
JOHN ST. LEGER	2012
JOE TOMMARELLO	2012
RICHARD ZUCCO	2012



Pivik 2011





GEORGE
PIVIK ELEMENTARY SCHOOL

**Demographic School Analysis:
Population Projections for the
Plum Borough School District**

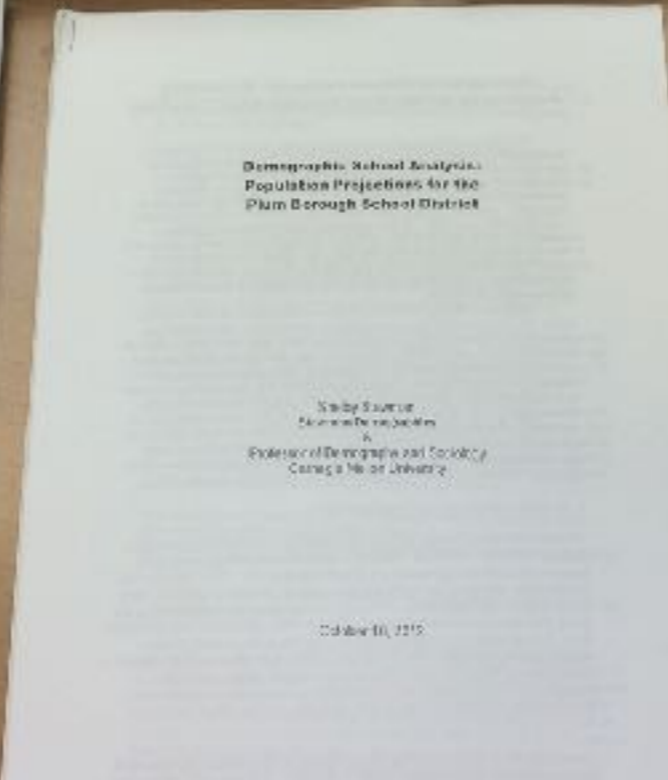
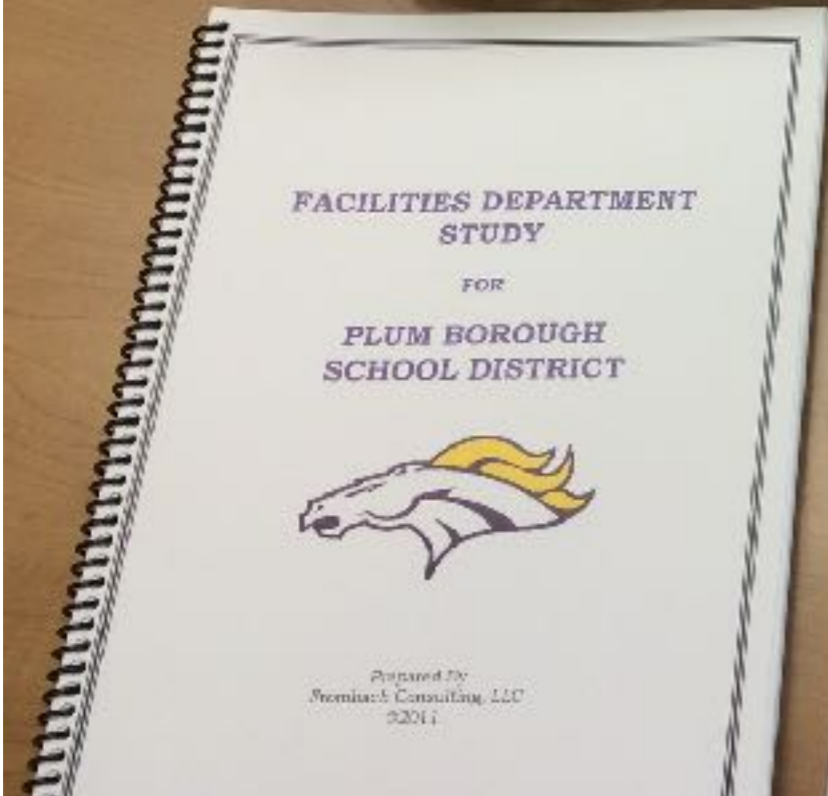
Shelby Stewman
Stewman Demographics
&
Professor of Demography and Sociology
Carnegie Mellon University

10/16/12

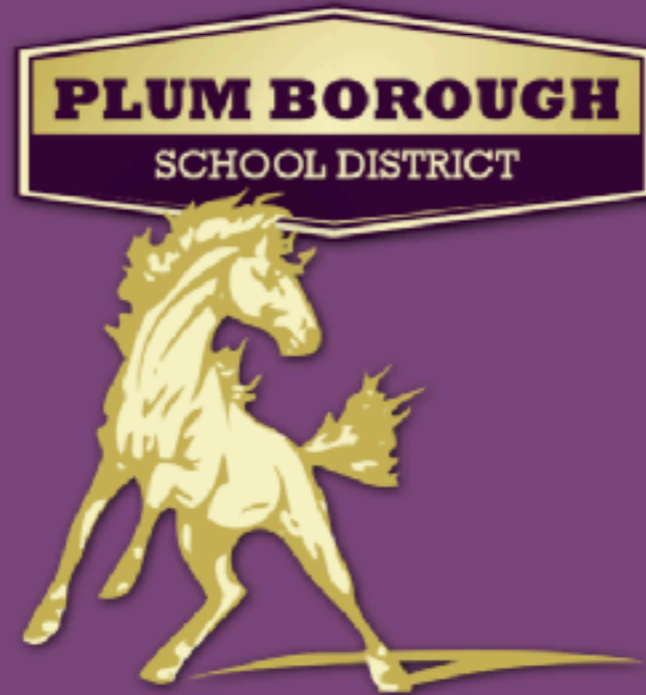


PBSD Strategic Plan

2012



2011, 2012, 2014



+ Literature / Research on
Grade Configurations

November 2013

Public Presentation

Center Elementary Summer 2013 >\$400,000

Air Condition

Gym Floor Repair

STEM Room



L.R. Kimball™

TARGETED RESULTS. EXPERTLY MANAGED.
WE STAKE OUR REPUTATION ON IT.

A CDI Company

ACT 34 PUBLIC HEARING
For the
**NEW HOLIDAY PARK
ELEMENTARY SCHOOL**

Thursday, June 20, 2013 6:00 PM
Plum Senior High School Auditorium
900 Elicker Road
Plum, Pennsylvania

PDE Project No. 3608



June 2013



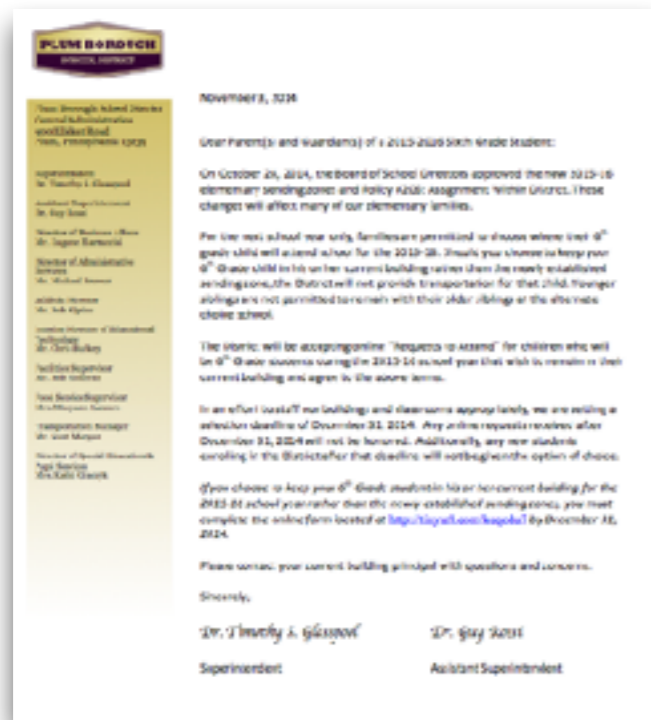


COMPREHENSIVE PLAN

PBSD Comprehensive Plan

2014

Redistricting 2015...



Please type first and last name

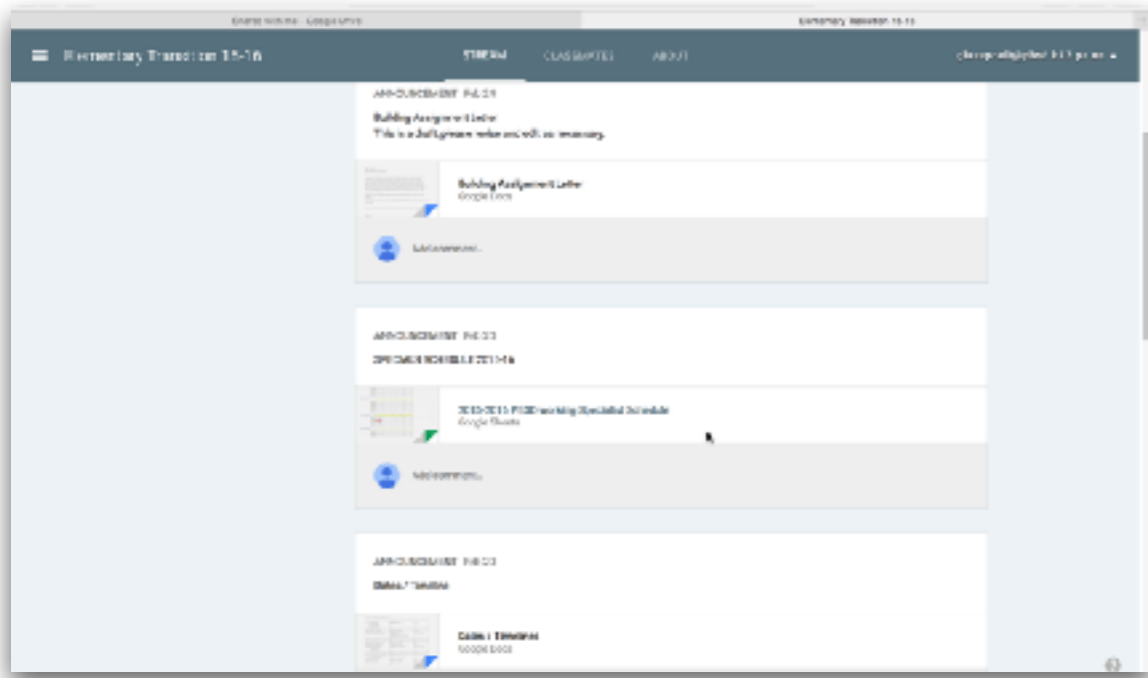
FIRST CHOICE Building Preference *
Please indicate your building preference for 15-16

SECOND CHOICE Building Preference *
Please indicate your (second choice) building preference for 15-16

THIRD CHOICE Building Preference *
Please indicate your (third choice) building preference for 15-16

FIRST CHOICE Teaching Assignment *
Please indicate your FIRST preference for grade, subject, area, or position.

SECOND CHOICE Teaching Assignment *
Please indicate your SECOND preference for grade, subject, area, or position.



For students

Friendships -
Fear of coming - Kids need to be assigned with kids they knew - Check with other principals
When will kids be assigned? Earlier is better; they need to know their teacher; do bios of teachers,
Old kids be liaison to new kids - send post cards

Fear of unknown

Student generated movie - A day in the life

Can we do an All-School activity day?

Meet the teacher night?


New student orientation

Can we do a tour night? All schools do the same time.

Teacher Assignments

6th Grade & Parent Input

search this site **GO**

enhanced by 

Quick Links



[Athletics](#)



[District Email](#)



[Employee Portal](#)



[Employment](#)



[Facebook](#)



[Lunch Menus](#)



[Moodle](#)



[Parent/Student Portal](#)



[Plum Connect](#)



[Registration](#)



[Staff Directory](#)

Plum Borough School District Board of School Directors

President	Mr. Sal Colella	colellas@pbsd.k12.pa.us
Food Service & Nutrition Chair	Mr. Joe Tommarello	tommarelloj@pbsd.k12.pa.us
Treasurer & Personnel Chair	Mr. Kevin Dowdell	dowdellk@pbsd.k12.pa.us
Athletics Chair	Mr. John St. Leger	stlegerj@pbsd.k12.pa.us
Education Chair (Technology & Communications)	Mrs. Michele Gallagher	gallagherm@pbsd.k12.pa.us
Vice President & Facilities Chair (Safety & Security)	Mr. Richard Zucco	zuccor@pbsd.k12.pa.us
Transportation Chair	Mr. Tom McGough	mcgought@pbsd.k12.pa.us
Policy Chair	Mrs. Loretta White	whitel@pbsd.k12.pa.us
Finance Chair	Mrs. Michelle Stepnick	stepnickm@pbsd.k12.pa.us
Board Secretary	Mrs. Cindy Vento	ventoc@pbsd.k12.pa.us

2015-2016 Elementary Redistricting

Updated Timeline
 2015-2016 Elementary Sending Zones (Revised 112514)
 2015-2016 Elementary Sending Zones (Revised 112514) - Overview
 DWFS Sept 2014 addendum
 2014 District Wide Facility Study Update Interim Report
 School View - Elem Attendance Zones 2013-2014
 District View - Elem Attendance Zones 2013-2014
 Policy #206
 2012 Demographic Study
 2011 Facilities Study

Meeting Schedule

REVISED March Meeting Schedule

Budget Information

2015-16 Preliminary General Fund Budget
 2014-2015 Adopted Budget
 2013-2014 Adopted Budget
 2012-2013 Adopted Budget



Tentative Timeline for the 2015-2016 Elementary Redistricting, Staffing & Transition

1. **September 2014**
 - a. Official Board vote to close Holiday Park Elementary School
 - b. Send required documentation to the Department of Education
2. **October 2014**
 - a. Estimate the number of classroom runs and building locations necessary
 - b. Public presentation of proposed elementary school sending zones and Policy #206
 - c. Board approval of 2015-2016 Elementary school sending zones
 - d. Board approve a revised Policy #206
 - e. Board decision regarding request to attend outside sending zone
 - f. "grandfathering" of 6th grade students in all schools
3. **November 2014**
 - a. Critical needs assessment of elementary school staffing
 - i. Creation and elimination of professional positions
 - b. Written notice to all bargaining unit employees regarding furlough possibilities
4. **December 2014**
 - a. Administration assignments and subsequent re-assignments
5. **January - March 2015**
 - a. 2015-2016 faculty staffing
6. **April, May & June 2015**
 - a. Plan for physical move
 - b. Plan for student transitions
 - c. Custodial, administrative assistant, cook manager, and cafeteria worker assignments and subsequent re-assignments
7. **June 2015**
 - a. Send furlough notices
8. **June, July & August 2015**
 - a. Classroom and building setup
9. **July 2015**
 - a. Paraprofessional assignments
10. **August 2015**
 - a. Holiday Park Elementary School Dedication
 - b. Building tours and open house activities at all elementary schools

Holiday Park Elementary School (Oblock Campus)

LR Kimball 2013 (Act 34)

Amherst Borough School District
with Holiday Park Elementary School **PROPOSED PROJECT DESCRIPTION**



HOLIDAY PARK ELEMENTARY SCHOOL

DEDICATED AUGUST 2015

BOARD OF DIRECTORS

SAL COLELLA

JOHN ST. LEGER

KEVIN DOWDELL

MICHELLE STEPNIK

MICHELE GALLAGHER

LORETTA WHITE

TOM MCGOUGH

RICHARD ZUCCO

ADMINISTRATION

DR. TIMOTHY S. GLASSPOOL

SUPERINTENDENT

DR. GUY ROSSI

ASSISTANT SUPERINTENDENT

EUGENE J. MARRACCINI

DIRECTOR OF BUSINESS AFFAIRS

D. JASON KNISELY

PRINCIPAL, ADLAI STEVENSON

FRANCIS SCIULLO

PRINCIPAL, HOLIDAY PARK

CYNTHIA VENTO

BOARD SECRETARY

PROJECT MANAGEMENT

RUSSO CONSTRUCTION SERVICES

OWNERS SITE MANAGER

PA SOIL & ROCK

CIVIL ENGINEER

L.R. KIMBALL

ARCHITECT

HUDSON CONSTRUCTION INC.

GENERAL CONTRACTOR

LUGAILA MECHANICAL INC.

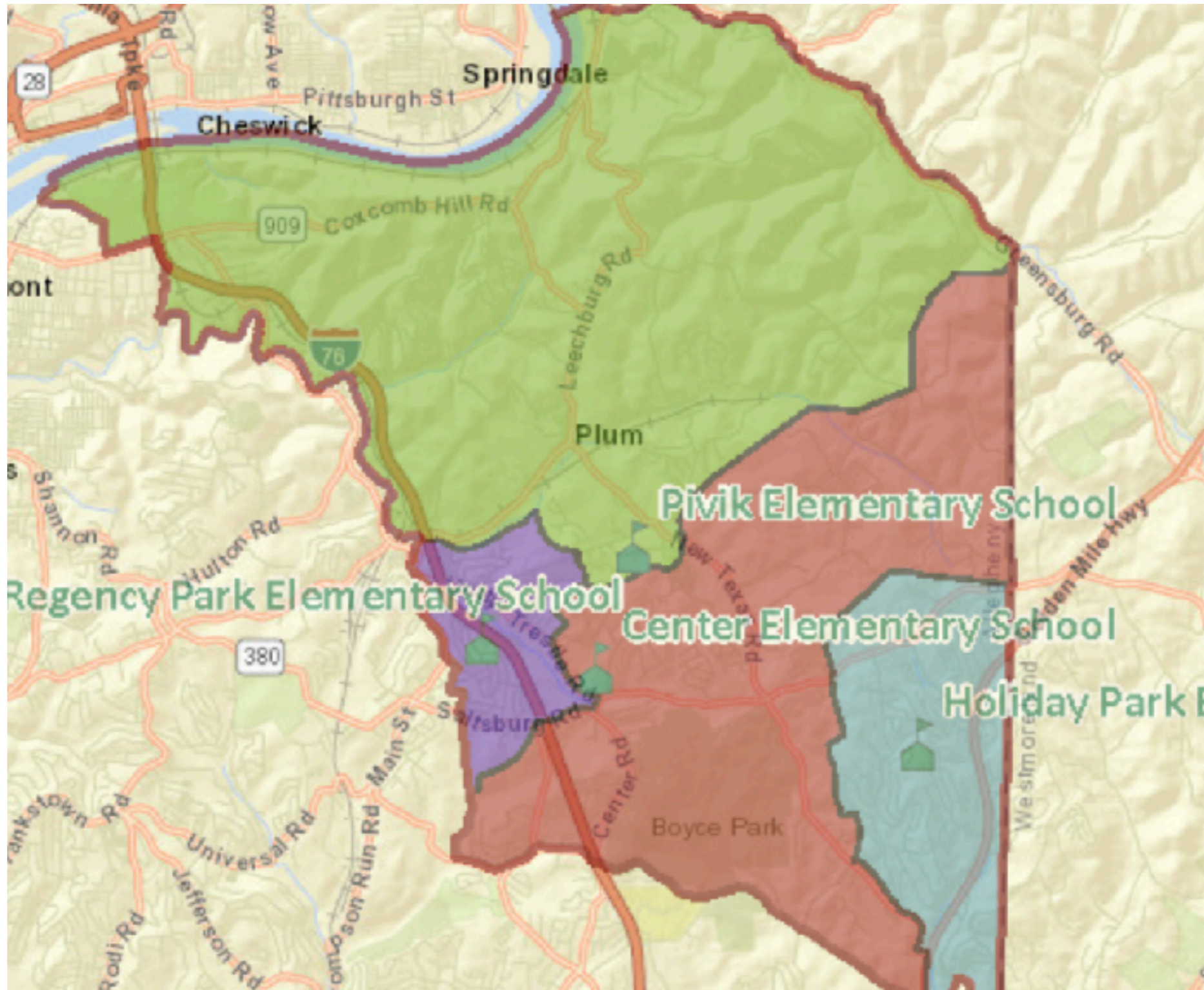
HVAC CONTRACTOR

VRABEL PLUMBING COMPANY

PLUMBING CONTRACTOR

VERN'S ELECTRIC INC.

ELECTRICAL CONTRACTOR



Redistricting 2015

2015 - - 2018

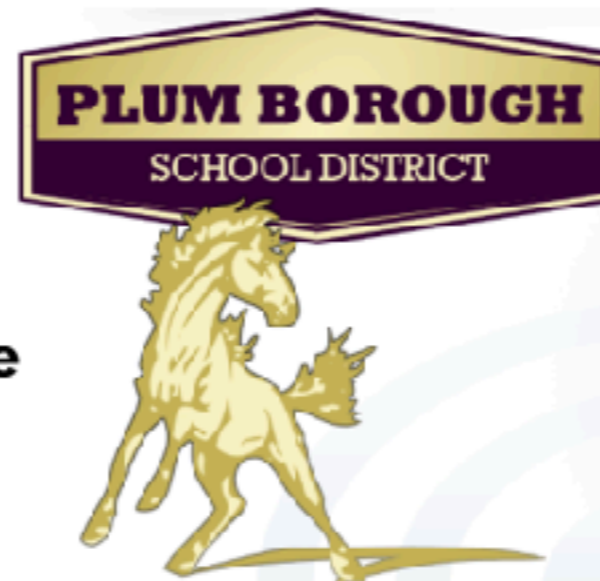
L.R. Kimball®

TARGETED RESULTS. EXPERTLY MANAGED.
WE STAKE OUR REPUTATION ON IT.

A CDI Company

2014 District Wide Facility Study Update Interim Report

Summary of Building Options



Summary of Building Options

Option ES-1a Elementary School Option / District K-6 Grade Alignment
Two story addition – comprehensive renovations @ Regency Park ES / 2 CR's per grade

Option ES-1b Elementary School Option / District K-6 Grade Alignment
One story addition @ 2 locations + comprehensive renovations to Regency Park ES / 2 CR's per grade

Option ES-2a Elementary School Option / District K-6 Grade Alignment
Two story addition – strategic renovations @ Center ES / 5 CR's per grade level / **DISCONTINUED**

Option ES-2b Elementary School Option / District K-6 Grade Alignment
Two story addition @ Center ES / 4 CR's per grade level
Comprehensive renovations @ Regency Park ES / 1 CR per grade level

Option MS-3a 6-8 Middle School Option / District K-5 Elementary Grade Alignment
Two story addition @ A.E.O Block HS accommodating District wide 6-8 enrollment
Comprehensive renovations @ Regency Park ES / 1 CR per grade level as K-5 facility

Option MS-3b 6-8 Middle School Option / District K-5 Elementary Grade Alignment
Two story addition – strategic renovations @ A.E.O Block accommodating District wide 6-8 enrollment
One story addition – strategic renovations @ Center ES / 4 CR's per grade level as K-5 facility / **MS-3a, MS-3b**

L.R. Kimball®
ARCHITECTURE • ENGINEERING • COMMUNICATIONS TECHNOLOGY
A CDI Company

AVIATION | CIVIL | CONSTRUCTION SERVICES | DATA SERVICES | ELECTRICAL
MECHANICAL ENGINEERING | GEOSPATIAL | NETWORKS | PUBLIC SAFETY | TRANSPORTATION

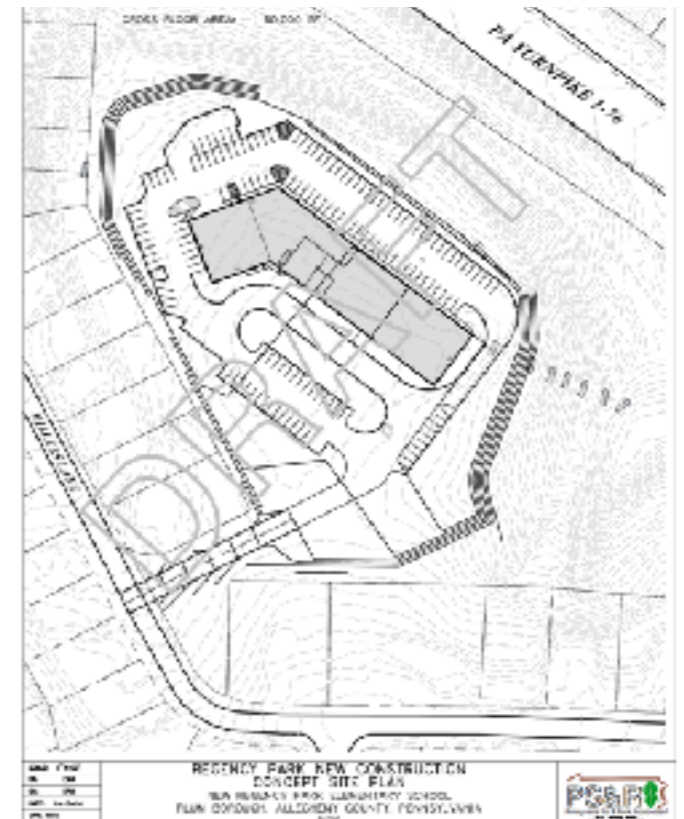
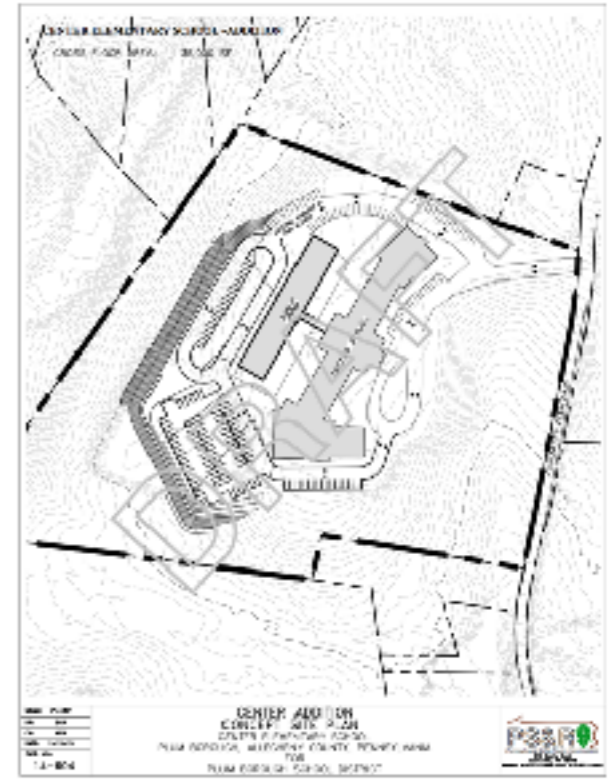
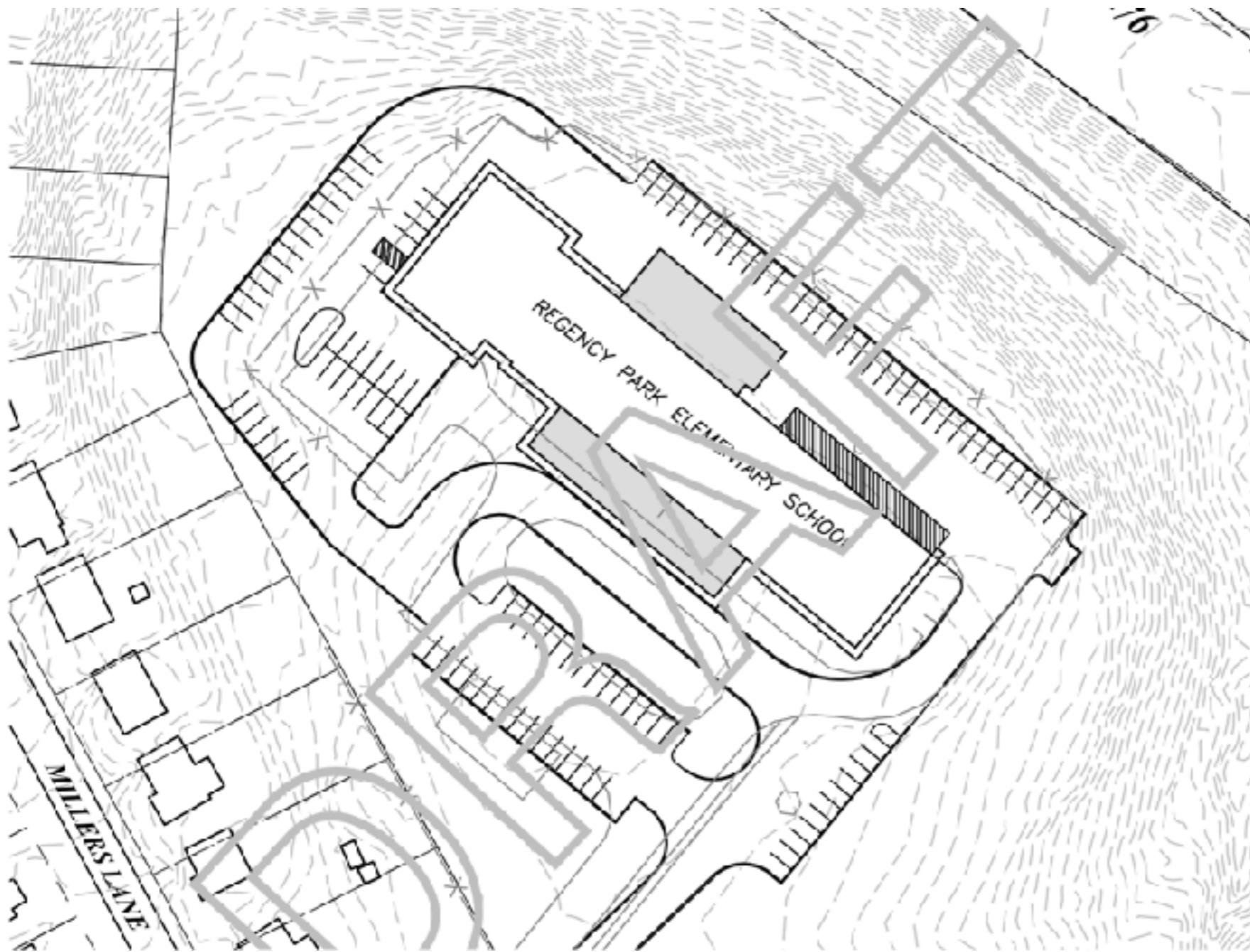


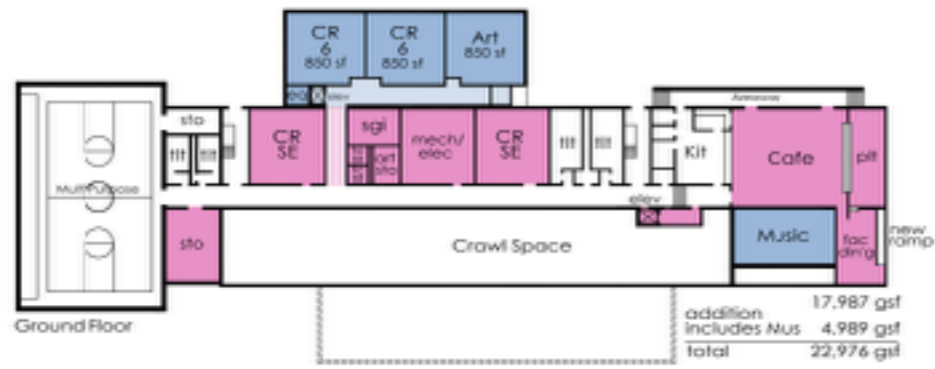
Summary of Building Options

MS-3a Middle School Option / District K-5 grade alignment
Two story addition @ A.E.O Block HS accommodating District wide 6-8 enrollment
Comprehensive renovations to Regency Park ES / 1 CR per grade level as K-5 facility



L.R. Kimball 2014-2015, 6 building options, including a middle school





Regency Park Elementary School
Option ES-1b
Proposed Revisions

new addition
exist'g program change/
renovations



PROJECT NAME
REGENCY PARK ELEMENTARY SCHOOL

OWNER
Pine Bluff School

ADDRESS
Pine Bluff, AR 71601

P.O. BOX
Project No.

CONTRACTOR

NOT FOR CONSTRUCTION

PROFESSIONAL

DATE

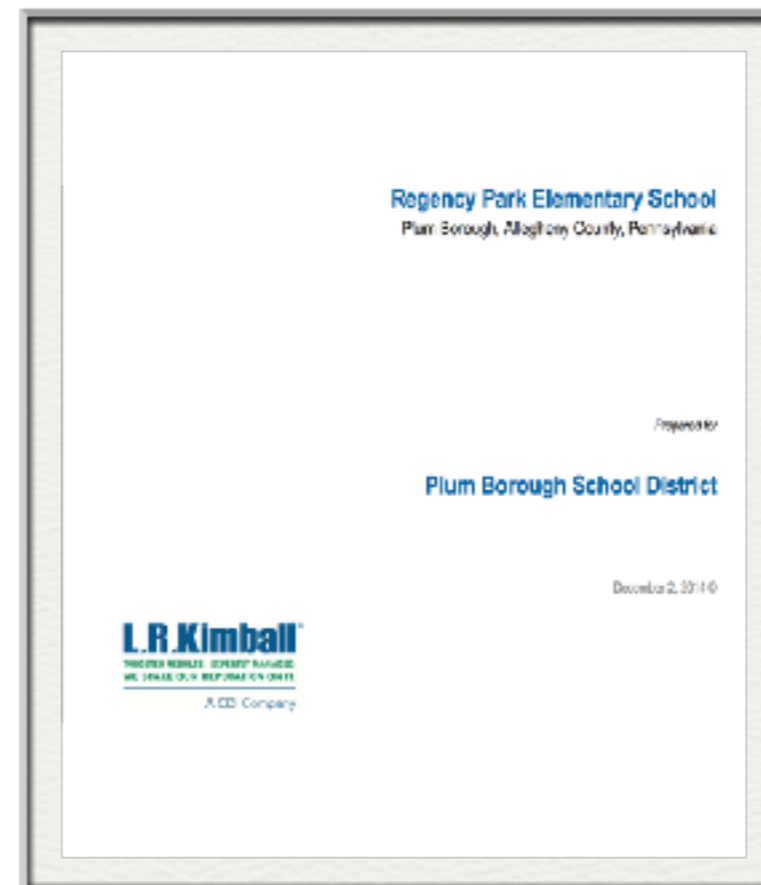
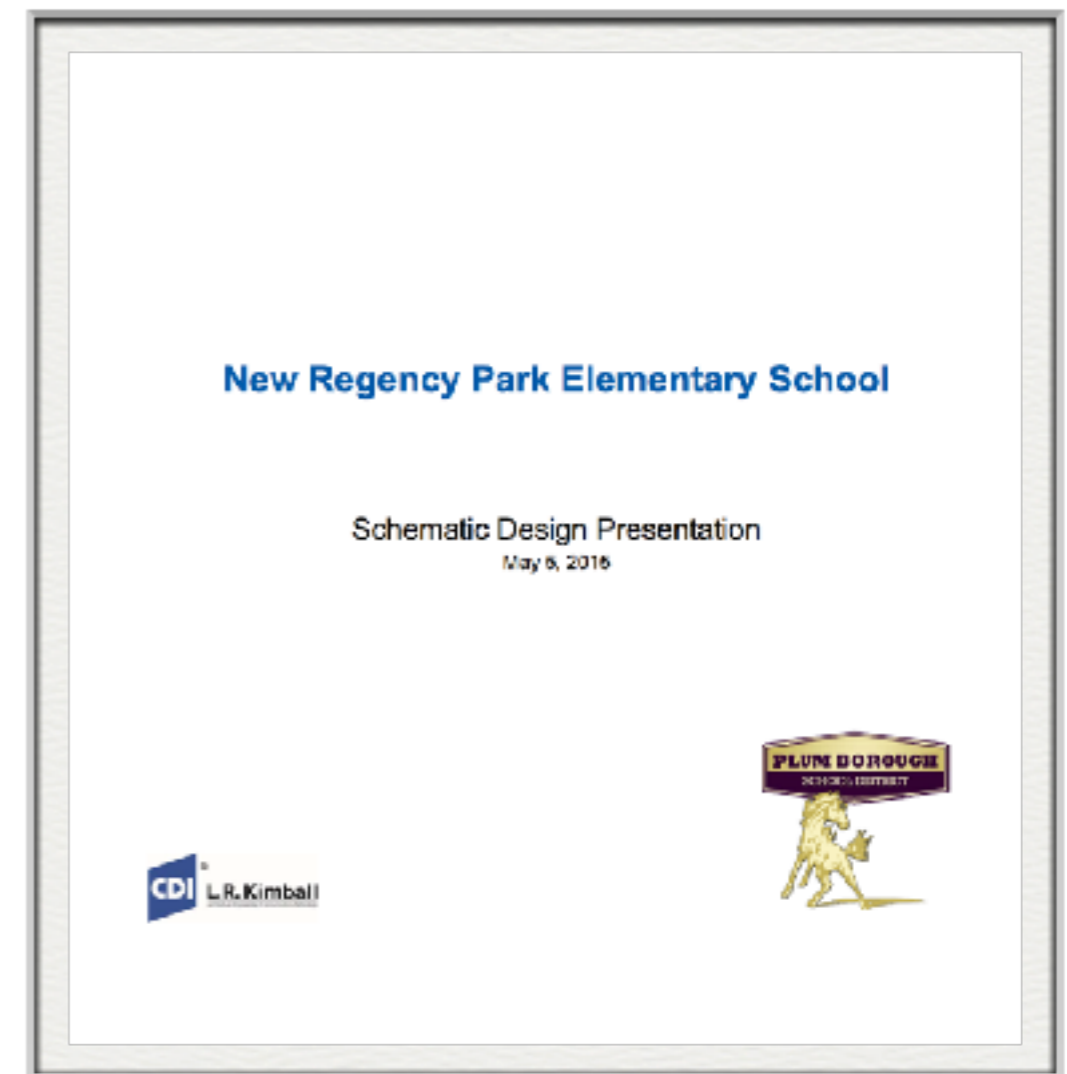
SCALE



Regency Park Elementary School

LK Kimball 2014

As Part of redistricting and in anticipation of the new Building, Regency Park students were moved to “old” Holiday Park.



L.R. Kimball

TARGETED RESULTS. EXPERTLY MANAGED.
WE STAKE OUR REPUTATION ON IT.

A CDI Company

ACT 34 PUBLIC HEARING

For the
**NEW REGENCY
ELEMENTARY SCHOOL**

Wednesday, August 26, 2015 at 6:00 PM
Plum Senior High School Board Room
900 Elicker Road
Plum, Pennsylvania

PDE Project No. 3830



ARCHITECTURE • ENGINEERING • COMMUNICATIONS TECHNOLOGY
AVIATION | CIVIL | CONSTRUCTION SERVICES | DATA SYSTEMS | ENVIRONMENTAL
FACILITIES ENGINEERING | GEOSPATIAL | NETWORKS | PUBLIC SAFETY | TRANSPORTATION

Plum Borough School District
New Regency Park Elementary School **PROPOSED PROJECT DESCRIPTION**



L.R. Kimball
ARCHITECTURE • ENGINEERING • COMMUNICATIONS TECHNOLOGY
A CDI Company

ARCHITECTURE • ENGINEERING • COMMUNICATIONS TECHNOLOGY
AVIATION | CIVIL | CONSTRUCTION SERVICES | DATA SYSTEMS | ENVIRONMENTAL
FACILITIES ENGINEERING | GEOSPATIAL | NETWORKS | PUBLIC SAFETY | TRANSPORTATION

Plum Borough School District
New Regency Park Elementary School **PROPOSED PROJECT DESCRIPTION**



L.R. Kimball
ARCHITECTURE • ENGINEERING • COMMUNICATIONS TECHNOLOGY
A CDI Company

ARCHITECTURE • ENGINEERING • COMMUNICATIONS TECHNOLOGY
AVIATION | CIVIL | CONSTRUCTION SERVICES | DATA SYSTEMS | ENVIRONMENTAL
FACILITIES ENGINEERING | GEOSPATIAL | NETWORKS | PUBLIC SAFETY | TRANSPORTATION

LRK August 2015, Regency Park Act 34 Hearing (2 run school)

Construction of the NEW REGENCY PARK ELEMENTARY SCHOOL

606 Millers Lane
Plum, PA 15239

Plum Borough School District

900 Elicker Road
Plum, PA 15239

CDI Architects Group LLC dba
L.R. Kimball - Architecture and Engineering
The Frick Building, Suite 812
437 Grant Street



PROJECT LOCATION MAP



Frick Building - Suite 812
437 Grant Street
Pittsburgh, PA 15219

Construction of the
**NEW REGENCY PARK
ELEMENTARY SCHOOL**

OWNER
Plum Borough School District
900 Elicker Road
Plum, PA 15239

PDE Project No.

CONSULTANT

**NOT FOR
CONSTRUCTION,
PROGRESS SET**

PROFESSIONAL

KEY PLAN

MARK	DATE	DESCRIPTION

ISSUE: **06 / 15 / 2015**
PROJECT NO: 15-2000-0219
AUTHOR BY: Author
CHECKED BY: LSK/SHB
CDI Architects Group LLC dba
L.R. Kimball - Architecture and Engineering

SHEET TITLE
COVER SHEET

Pittsburgh, PA 15219

G001

DESIGN DEVELOPMENT DOCUMENTS

December 2015

Regency Park Elementary School (2 Run, K-6)

Plan Con process did not move forward as designed by LR Kimball



DWFS 2016

VEBH Architects: *Plum Borough School District*

Board Meeting – 08/16/16

Potential Project Overview:

Oblock Middle School Conversion

Additions with Minor Upgrades (Non-Reimbursable Project)

vs.

Additions/Alterations (Reimbursable Project)

VEBH Architects
District Wide Facility Study



Wednesday, March 16, 2016 @ 6:00pm
Oblock Junior High Auditorium
Town Hall Forum, community comment, "open mic"
Master plan development

Wednesday, April 20, 2016 @ 6:00pm
Oblock Junior High Auditorium
Discussion of conceptual designs
Gather additional input

Tuesday, May 10, 2016 @ 7:00pm
Borough Council Chambers
Formal Board & community presentation
Draft document presented to public
Top options & VEBH recommendations

Tuesday, May 24, 2016 @ 7:00pm
Borough Council Chambers
Final DWFS presented in final form



VEBH Architects Feb 2016 - Sept 2016



K-4, 5-6, 7-8

School Configuration (Without a Bond Issuance)

January 17, 2017
Public Presentation

School	Grades	Capacity	Estimated Distribution	Repairs and Renovations
Center	5 & 6	525	551	X
Holiday Park	K-4	700	700	
Pivik	K-4	700	700	
Oblock	7 & 8	750	597	X
K-4 - 1397				Redistrict 18 -19
*56 classrooms				
*25 pupils per classroom				

Renovate with remaining
2014 Bond Issuance

K-4 & 5-8

School	Capacity	Pupil population	Estimated Distribution	Repairs and Renovations
Pivik (K-4)	700	50%	700	
Center (5-8)	525	35%	401	X
Holiday Park (K-4)	700	50%	700	
Oblock (5-8)	750	*65%	747	X
K-4 pop - 1397				Redistrict 18 -19
5-8 pop - 1148				
*15% pop shift				

Renovate with remaining
2014 Bond Issuance

PBSD today

- 3800 students
- 525 FTE/PTE
- 28,000 residents
- More than 725,000 square feet under roof
- More than 225 acres

	K	1	2	3	4	5	6	7	8	9	10	11	12	Enrollment
Pivik	91	79	90	94	95	83	92							624
Center	48	62	66	82	73	68	61							460
Holiday Park	88	74	85	94	94	100	79							614
Regency Park	32	32	42	45	31	36	32							250
Sub-Total	259	247	283	315	293	287	264							1948
Oblock								294	303					597
High School									1	301	316	310	326	1254
TOTAL														3799

Enrollment as of 1/10/17

Historic 1998 - 2017

Academic Year	1998-99	1999-20	2000-01	2001-02	2002-03	2003-04	2004-05	2005-06	2006-07	2007-08	2008-09	2009-10	2010-11	2011-12	2012-13	2013-14	2014-15	2015-16	2016-17
TOTAL ELEMENTARY	2,293	2,236	2,186	2,157	2,168	2,190	2,186	2,178	2,144	2,108	2,102	2,111	2,075	2,009	1,962	2,020	2,012	1,951	1,948
TOTAL SECONDARY	2,145	2,127	2,161	2,140	2,215	2,244	2,192	2,192	2,158	2,113	2,087	2,052	1,971	1,997	1,959	1,924	1,878	1,860	1,853
	4,438	4,363	4,347	4,297	4,383	4,434	4,378	4,370	4,302	4,221	4,189	4,163	4,046	4,006	3,921	3,944	3,890	3,811	3,801

Historic by building

	2012-2013	2013-2014	2014-2015	2015-2016	2016-2017
PHS	1326	1346	1283	1280	1257
Pivik	522	562	582	609	621
Oblock	667	632	604	602	599
Center	401	405	377	466	448
Holiday Park	455	483	468	637	612
Regency Park	241	244	230	229	250
Adlai	354	354	331		
Total	3966	4026	3875	3823	3787

Demographic information for consideration

- 2015 US Census Bureau
 - April 2010 to July 2015 the Borough of Plum experienced a population increase of 4.1 - 4.7%
- 2017 Borough of Plum
 - Since 2010 the Borough of Plum experienced a utility customer increase of roughly 500
 - More than 1000 new homes built in the last 10 years
 - 528 to be constructed in the next few years

Demographic information for consideration (continued)

- **2003 Demographic Study** (Dr. Shelby Stewman)
 - Scenario I most accurate in 2012
 - Fertility/Aging/Embedded Growth
 - From 2003 to 2012 enrollment decreased by 377 students
 - Underestimated by 29 total students
- **2012 Demographic Study** (Dr. Shelby Stewman)
 - Scenario II most accurate in 2017 (3800 as of 2-7-17)
 - Fertility/Aging/Embedded Growth with current retention and birth to kindergarten levels and lower fertility levels
 - From 2012 to 2017 enrollment decreased by 206 students
 - Overestimated by 3 total students
 - 2022 estimated total population - 3641
- **2012 PDE Enrollment Projection**
 - Accuracy in 2017 was Underestimated by 47 total students
 - 2022 estimated total population - 3348

Demographic information for consideration (continued)

- Based on Dr. Stewman's accurate 2012 estimate in 2003 and his more accurate 2017 estimate in 2012, as compared to PDE, his estimate is the best indicator of Plum's K-12 student enrollment in 2022.
- Projected K-12 population decrease of 159 students over the next 5 years.

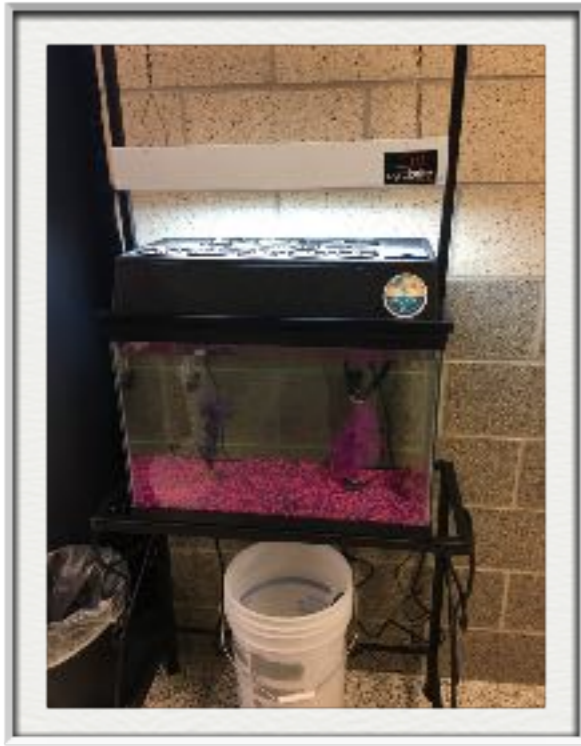
Financial factors for consideration

- 2016-2017 budget - We have an operating deficit of approximately \$5,416,787
- \$4,872,169 remaining from the Series 2014 Bond Issuance (\$10 million)
- \$120,422 - Series 2013
- Proposed new legislation eliminating property tax

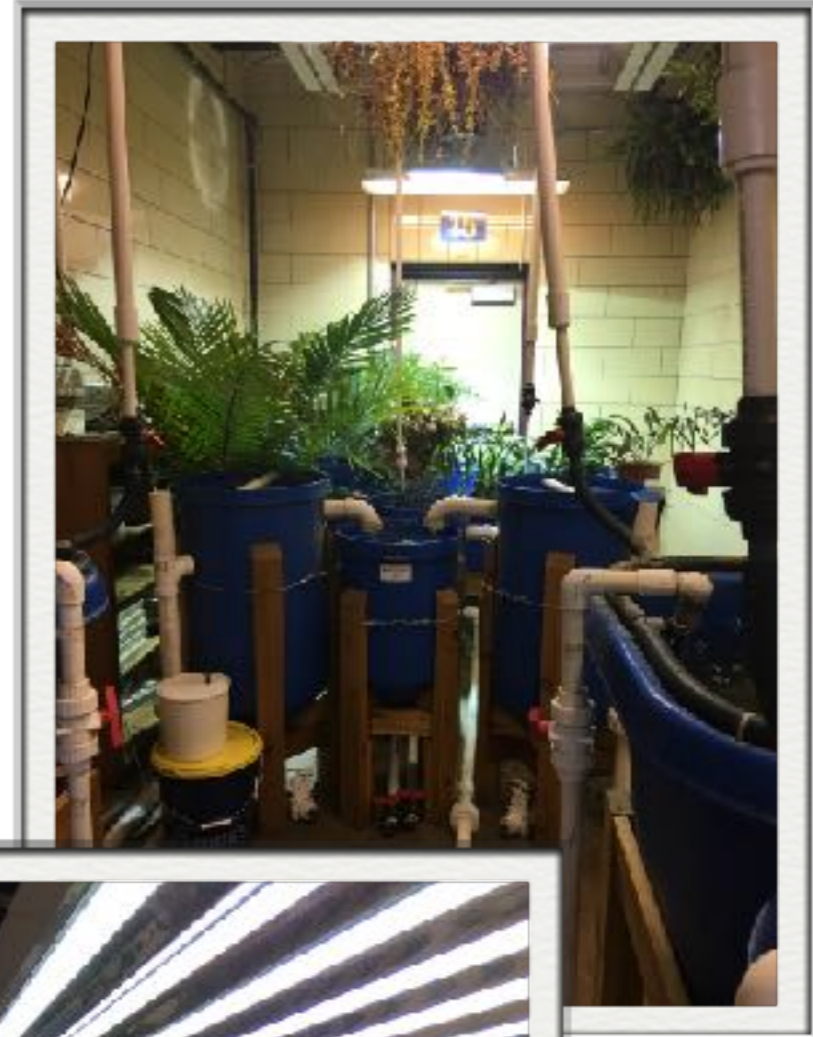
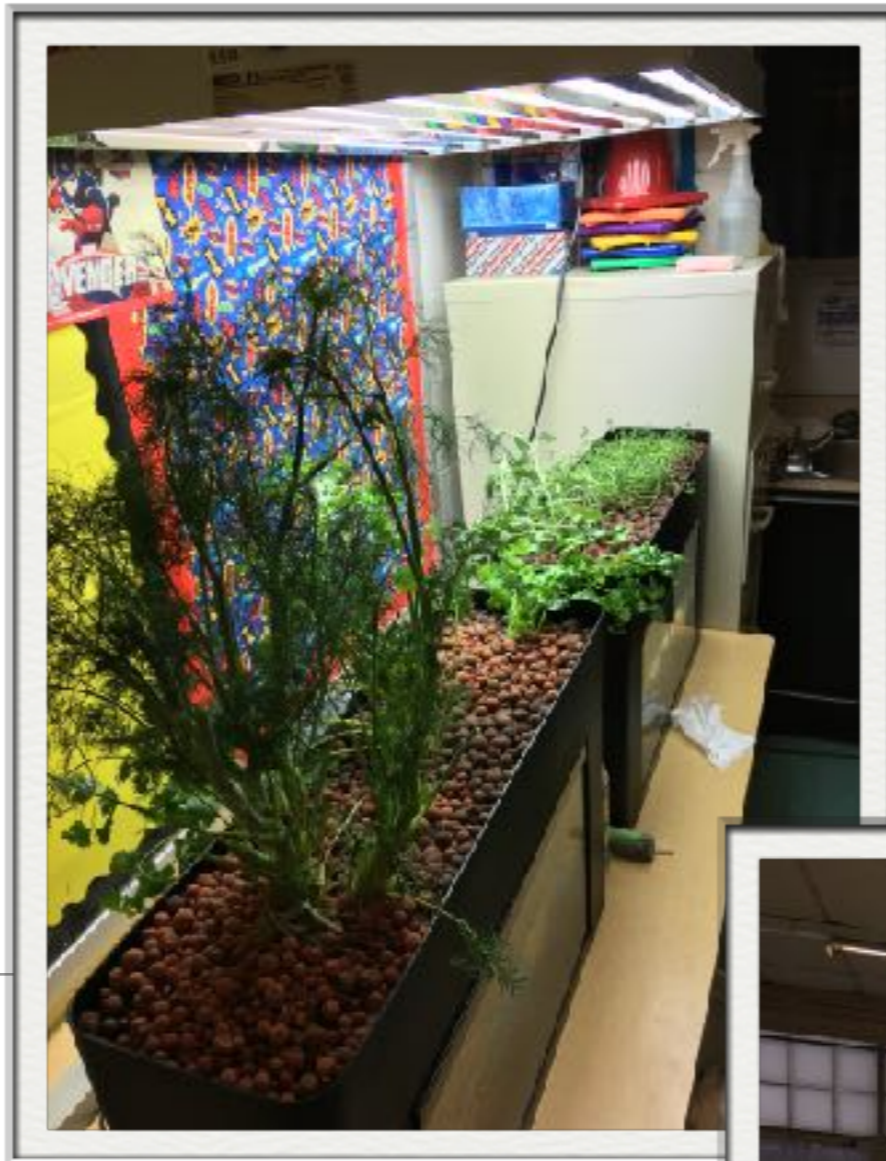
There were many intelligent and talented individuals who discussed options and opportunities well before tonight. They made decisions during times of growth, financial hardship and opportunity for specific purposes with good intentions.

Tonight is our time to engage in discussion regarding what the educational environment should look like in Plum.





Dr. Yamnitzky



Save the dates for our next parent meetings:

March 15, 2017 (6-8pm)

April 19, 2017 (6-8pm)

